

2021 AEDC Snapshot #3

Communities in South Australia



Communities in South Australia

This snapshot provides key findings about South Australia's (SA) results from the 2021 Australian Early Development Census (AEDC) for children by community areas.

Every child has the right to be thriving as they start their first year of full-time school regardless of where they live.

The AEDC is a reliable measure of child development across [five domains](#). It is a starting point for local governments and communities to identify the needs of children in their region. AEDC data helps schools, communities, councils and governments pinpoint and tailor services, resources, and support to help young children and their families.

A range of factors impact children's life outcomes. The AEDC can help us understand:

- the environments children are growing up in,
- what might be supporting or getting in the way of their development and wellbeing, and
- where to focus our efforts to make a difference.

When looking at AEDC results for communities, it is important to consider the number of children included in the collection alongside the proportion of the population that is represented by these results. It is important to be cautious when interpreting results at the community level. When a community is small, a minor change in the number of children may have a big impact on the proportion of children who are developmentally vulnerable. The number of children can also help communities determine the scale of response to their results to take.

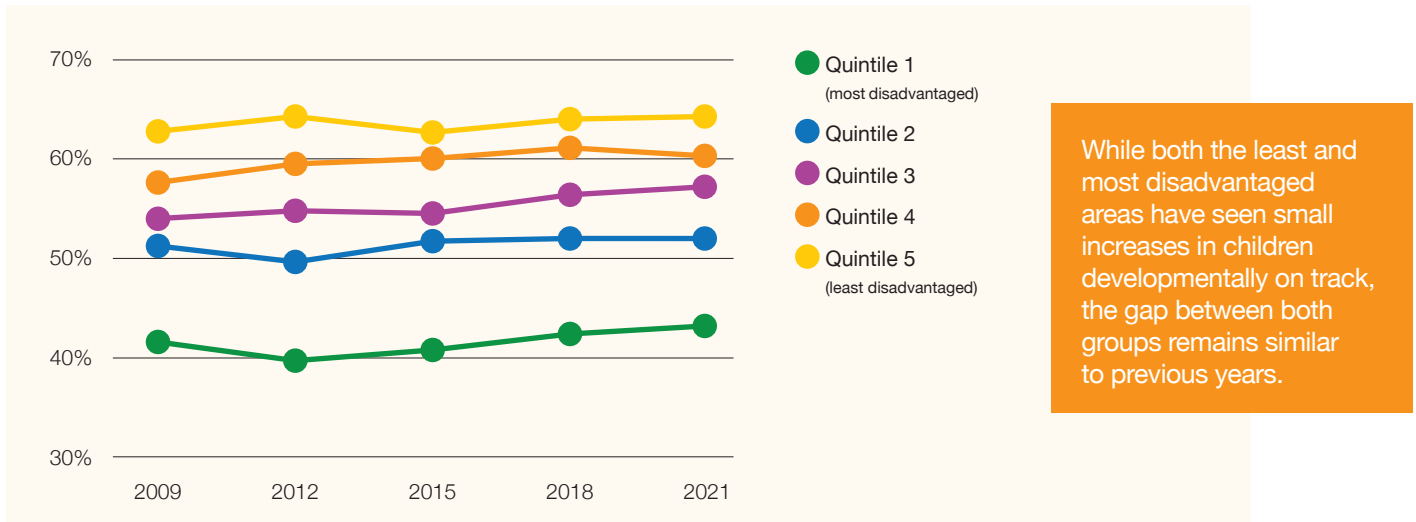
Factors that influence children's development within a community can change over time. Look at the AEDC community results, consider what is working well, what is not and what responses are needed to increase the proportion of children developing on track.

Factors that can influence children's development

Children do better when families:	What can help families?
Engage with quality early learning programs and experiences	Community and government collaboration
Provide responsive and positive caregiving	Healthy environments and access to transport
Provide security and safety	Connected and integrated services
Connect with other families in their community	Accessible information about services
Access services when needed	Appropriate service locations, operational hours, type, and costs
	Communities supporting social connection
	Employment and income
	Affordable and safe housing

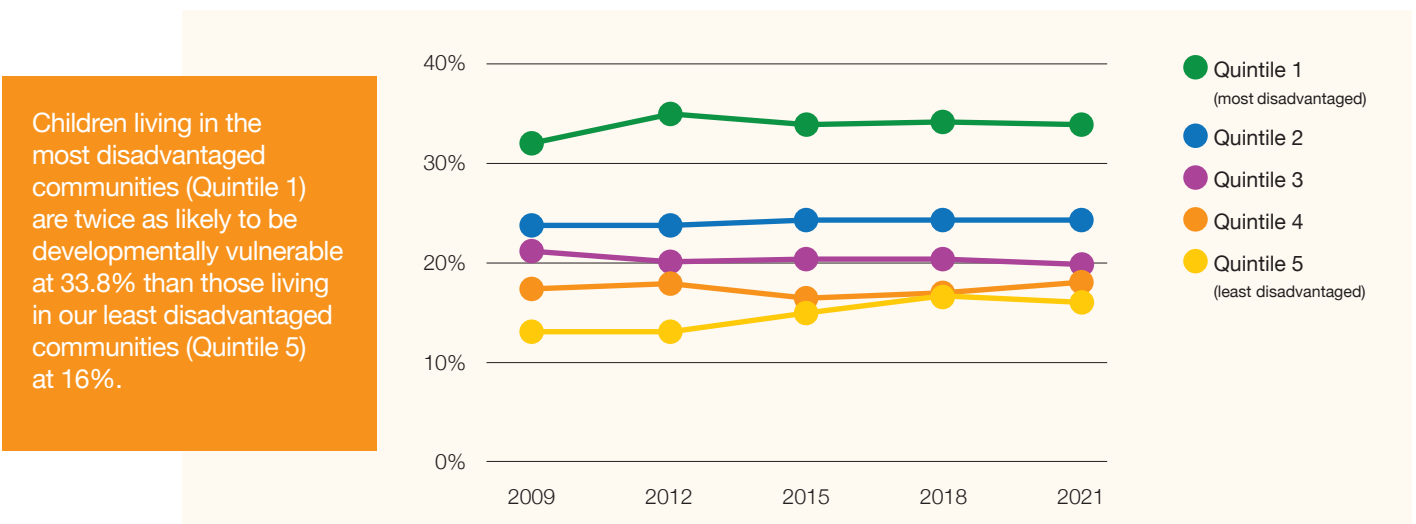
Socio-economic status

Percentage of children on track on all five domains



The majority of developmentally vulnerable children continue to live in the most disadvantaged communities. In contrast, children living in least disadvantaged communities are most likely to be developmentally on track.

Developmentally vulnerable on one or more domains



While the proportion of children developmentally vulnerable on one or more domains living in SEIFA Quintile 1 improved in 2021 at 33.8%, it remains higher than in 2009 at 31.8%.

These results show that inequity in early childhood development in SA has not improved over time. By responding to community level AEDC results in planning, policies, services and engagement with stakeholders, Local Councils, community organisations and governments can make a difference.

Councils and communities can partner with schools and preschools to shape, responsive planning, programs and environments.

The Socio-Economic Indexes for Areas (SEIFA) was developed by the Australian Bureau of Statistics to rank geographical areas in Australia according to their relative socio-economic advantage and disadvantage it remains higher than in 2009

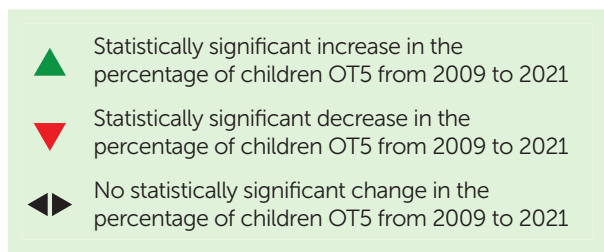
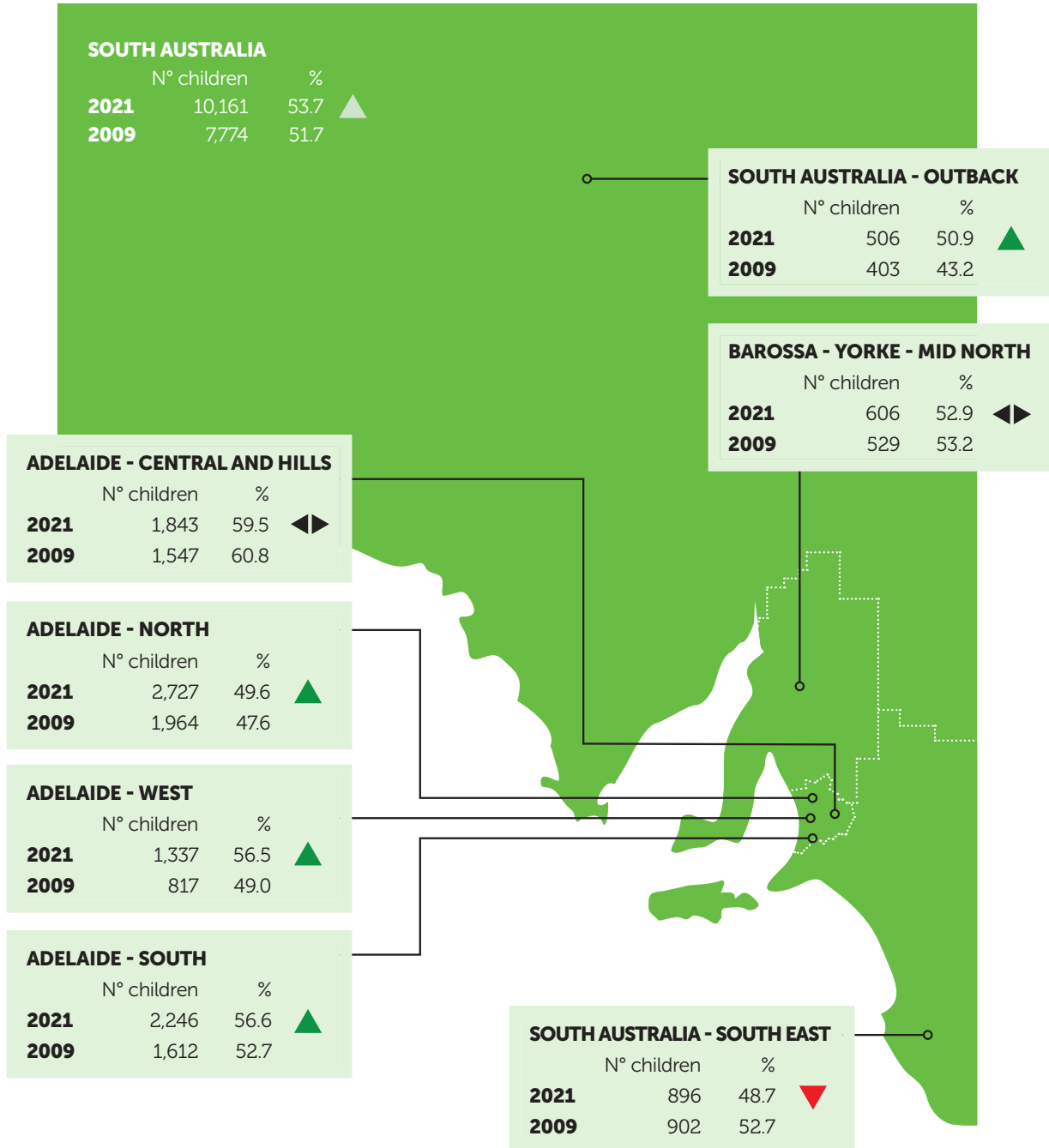
Sub-state regions (SA4)

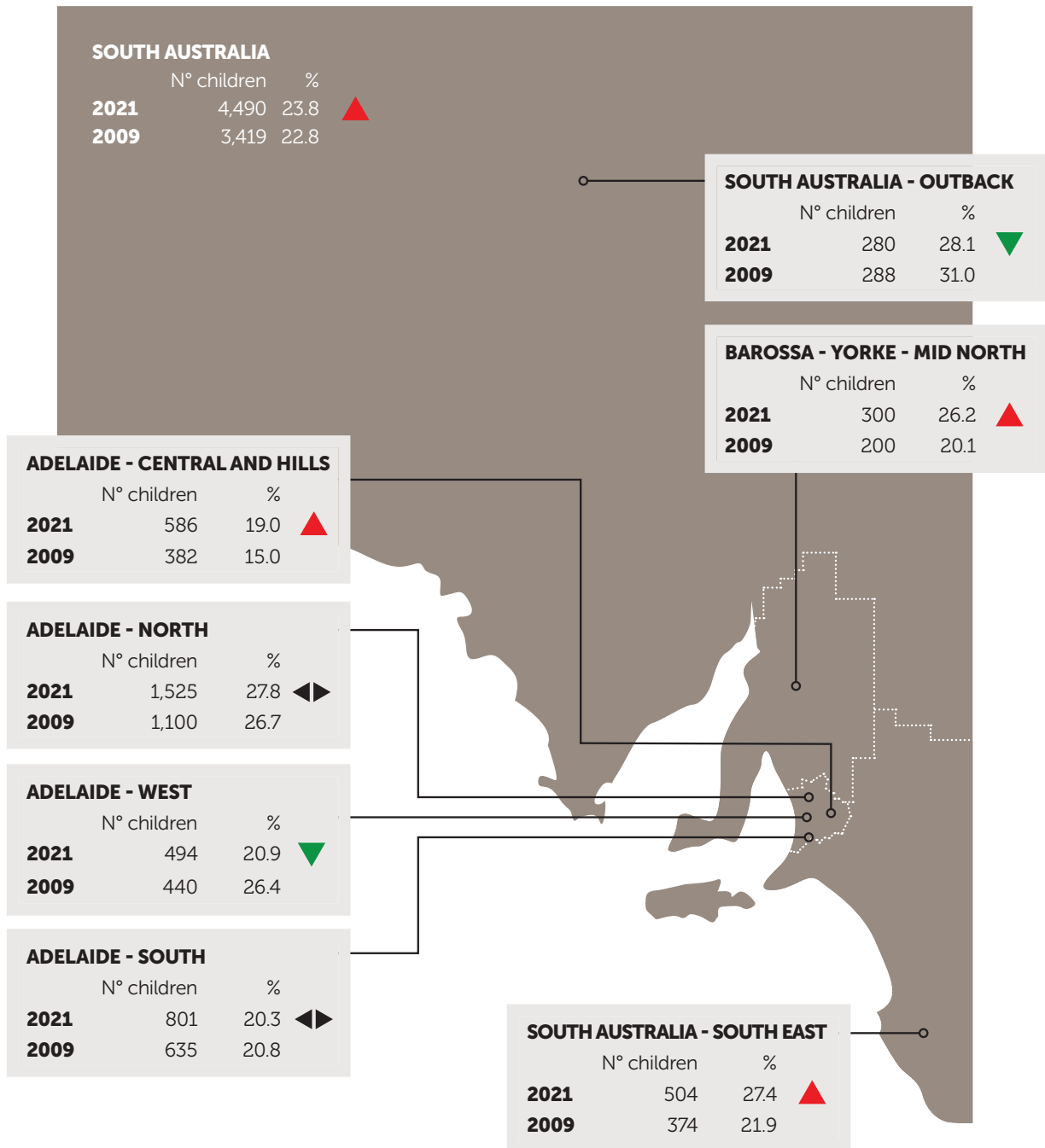
The SA 2021 AEDC results show that where children live matters. There are regions across SA where children are more likely to be developmentally on track as they start school.

While children living in South Australia – Outback region are most likely to be developmentally vulnerable on 1 or more domains, results are improving with more children now on track than ever before.

While there have been some improvements, further work is needed to make sure that all children are given the best start in life, regardless of where they live.

Developmentally on track on all five domains





▲ Statistically significant increase in the percentage of children DV1 from 2009 to 2021

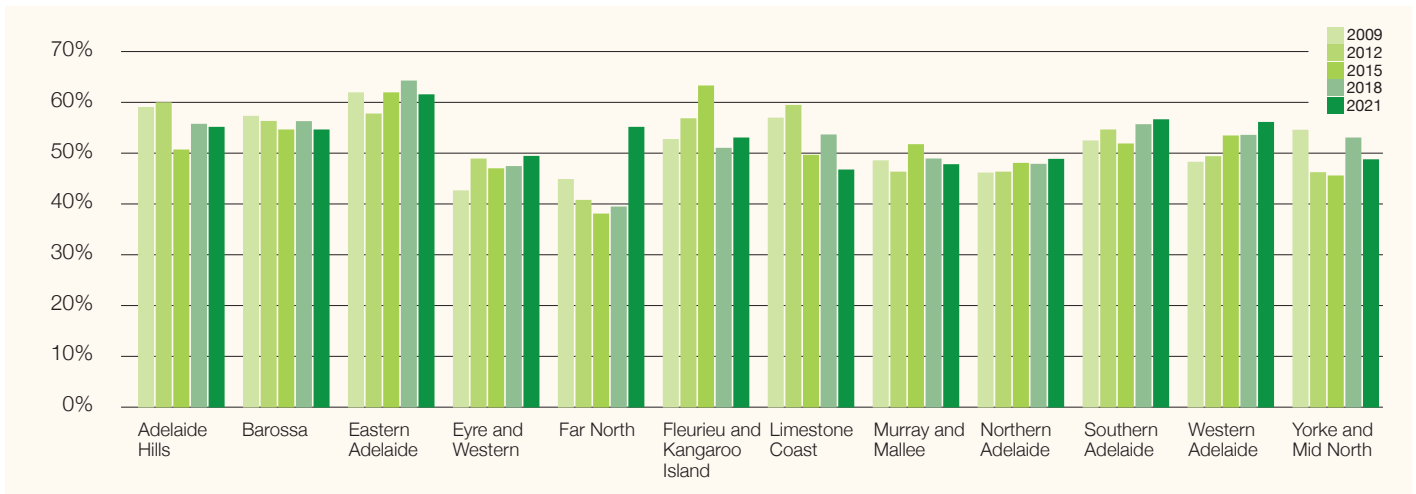
▼ Statistically significant decrease in the percentage of children DV1 from 2009 to 2021

◄► No statistically significant change in the percentage of children DV1 from 2009 to 2021

SA Government Region

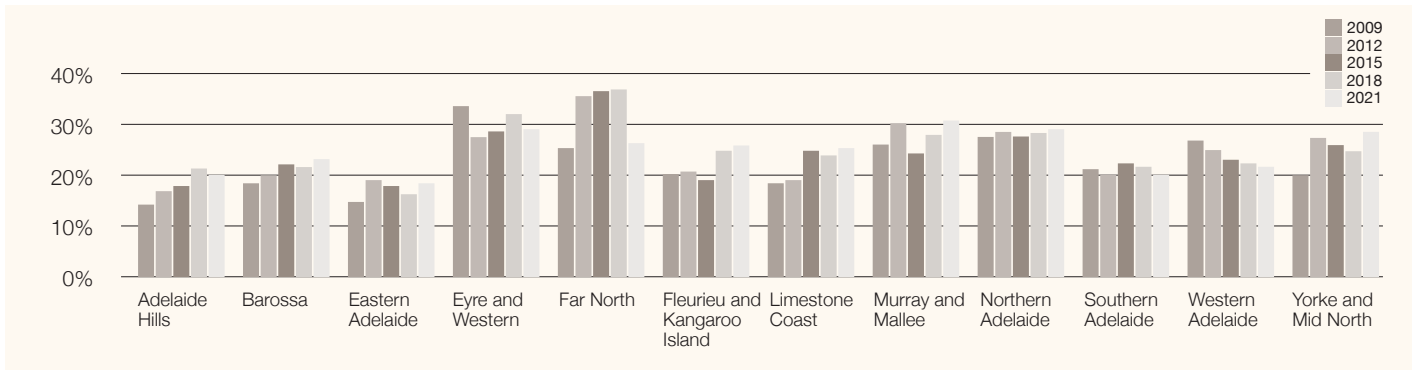
Looking at the results across the broader regional level can help communities and stakeholders come together to consider their results and identify community needs. Groups can share resources and collective planning to improve long-term outcomes for children, families and communities.

Percentage of children developmentally on track on all five domains



The results show that in the Western Adelaide region the proportion of children developmentally on track on all five domains has continued to improve since the 2009 collection, unlike other regions experiencing less consistent changes in their results.

Percentage of children developmentally vulnerable on one or more domains



Developmentally vulnerable children live in communities across all socioeconomic levels and geographic areas.

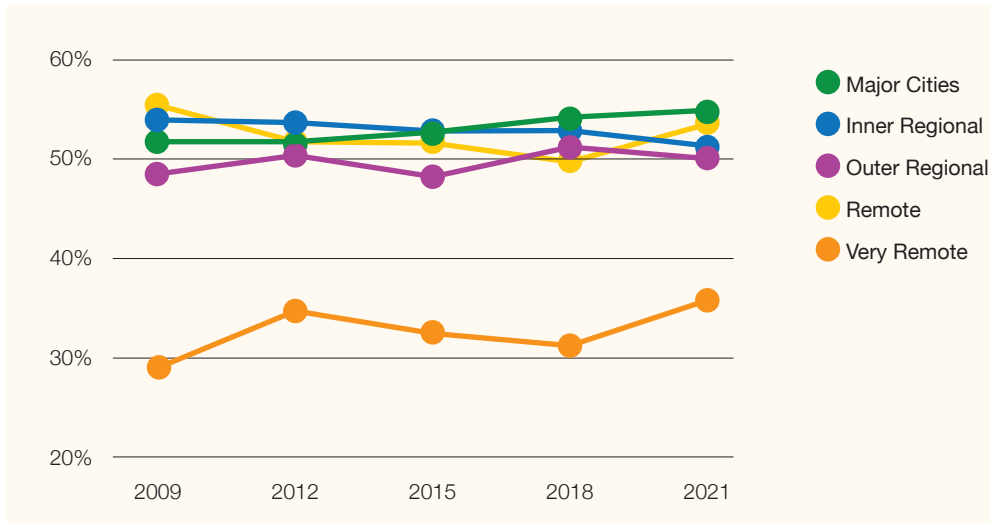
While outcomes for children in the Western Adelaide region continued to improve with the proportion of children developmentally vulnerable on one or more domain(s) decreasing over time, this was not the case in all other regions.

When looking at the AEDC results and thinking about what might be contributing to these changes it is useful to identify community strengths and build on these to support those who are not doing as well as others.

Geographic location

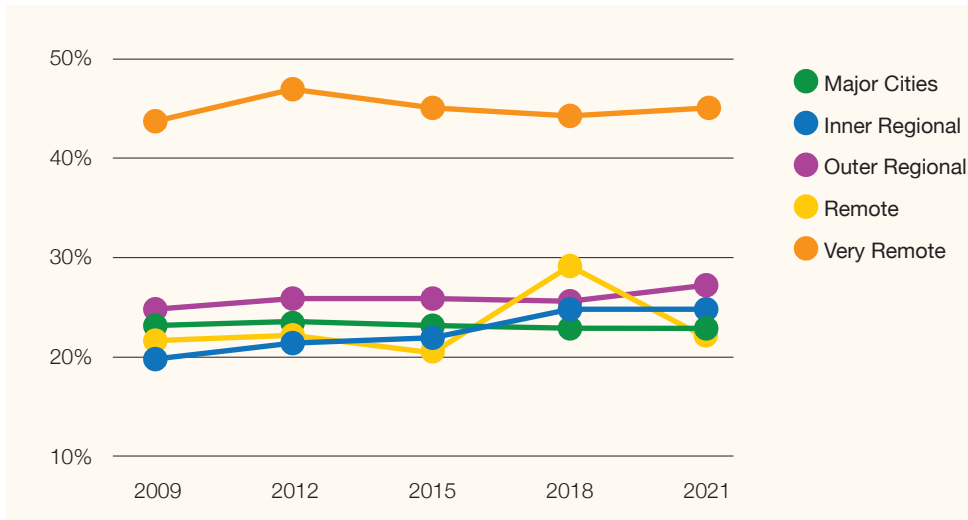
Children living in the major cities continue to be most likely to develop on track as they start school than those who live elsewhere.

Percentage of children developmentally on track on all five domains



Children in our inner regional and outer regional areas did not fare as well as those in our major cities, very remote and remote areas. All communities have strengths and AEDC data can be used to identify what is working well for children and families. Consider what is supporting children's development well and build on community's strengths.

Percentage of children developmentally vulnerable on one or more domains



Children living in our very remote areas continue to be more than twice as likely to be developmentally vulnerable than children living in the city area.

Major Cities

Adelaide
Adelaide Hills
Burnside
Campbelltown
Charles Sturt
Gawler
Holdfast Bay
Light
Marion
Mitcham
Norwood
Payneham St Peters
Onkaparinga
Playford
Port Adelaide Enfield
Prospect
Salisbury
Tea Tree Gully
Unley
Walkerville
West Torrens

Inner Regional

Adelaide Hills
Alexandrina
Barossa
Clare and Gilbert Valleys
Goyder
Light
Mallala
Mid Murray
Mount Barker
Mount Gambier
Murray Bridge
Onkaparinga
Playford
The Coorong
Victor Harbor
Wakefield
Yankalilla

Outer Regional

Barunga West
Berri and Barmera
Clare and Gilbert Valleys
Cleve/Franklin Harbour
Copper Coast
Flinders Ranges
Goyder
Grant
Loxton
Waikerie
Mount Remarkable/Orroro/Carrieton
Naracoorte and Lucindale
Northern Areas
Peterborough
Port Augusta
Port Pirie City and Districts
Renmark Paringa
Robe/Kingston
Tatiara
The Coorong
Wakefield
Wattle Range
Whyalla
Yorke Peninsula

Remote

Cleve/Franklin Harbour
Far North and Flinders
Kangaroo Island
Lower Eyre Peninsula
Southern Mallee/Karoonda
East Murray
Tumby Bay
Yorke Peninsula

Very Remote

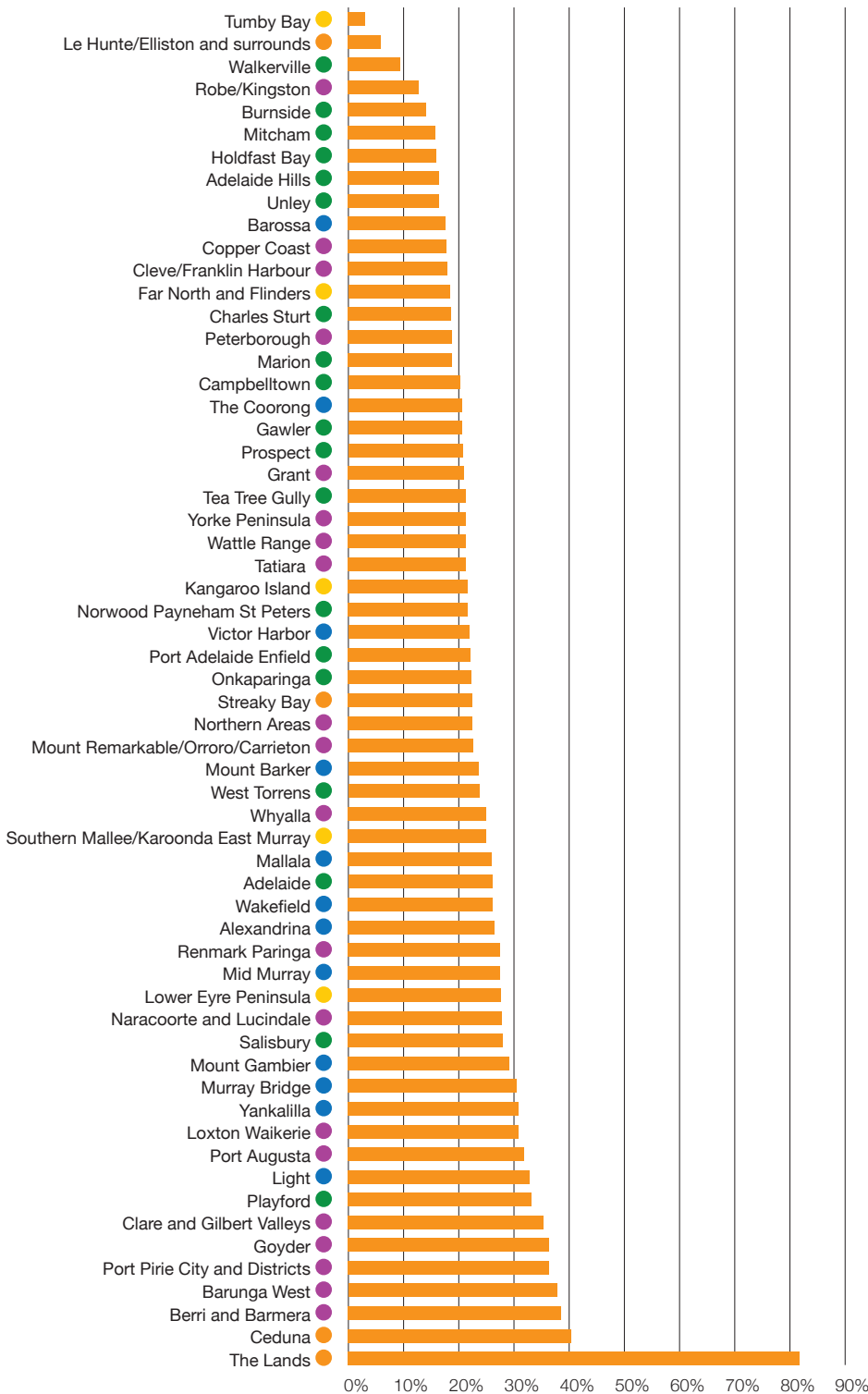
Ceduna
Coober Pedy
Far North and Flinders
Le Hunte/Elliston and surrounds
Streaky Bay
The Lands

Note: AEDC communities may span over more than one geographic area.

Communities

Local governments and community services play a key role in promoting early child development for later development and wellbeing.

Percentage of children developmentally vulnerable on one or more domains



In 2021, the levels of developmental vulnerability in SA communities ranged from 3.6% in Tumby Bay to 82% in The Lands. In 2021, 27 SA communities have a lower percentage of children developmentally vulnerable on one or more domains compared to Australia at 22%.

- Major Cities
- Inner Regional
- Outer Regional
- Remote
- Very Remote

Note:

When comparing the proportion of children developmentally vulnerable, at risk or on track across collections, it is important to consider the number and proportion of children.

For smaller groups, results should be interpreted with caution. It only takes a change in a few children to have a big impact on the percentage reported.

Making a change

To increase the proportion of SA children developing on track, and reduce the number developmentally at risk or developmentally vulnerable by the time they start full-time school, communities can use the AEDC in many ways:

- to inform your policies, services and planning to better help families support children's development
- to consider what might be getting in the way of children's development at the community level
- to ensure families can access the right mix of universal and targeted services regardless of the community they live in
- to inform collaborative approaches and investments
- to measure change.

By supporting early childhood development and wellbeing, we are contributing to the wellbeing and future prosperity of citizens and communities.

Go to the [AEDC Data Explorer](#) to explore results by AEDC community and local community and compare with state and national results or to download the 2021 Community profiles.

Interactive maps displaying AEDC results for SA are available on Location SA map [viewer](#). Metadata provides information on children developmentally on track on all five domains (OT5) and developmentally vulnerable on one or more domains (DV1) to help communities and governments to explore their data alongside other relevant datasets like service locations.

To find out more information visit the [AEDC national website](#), the [Department for Education website](#), download the [2021 AEDC National Report](#) or send an email to Education.AEDCTeam@sa.gov.au.