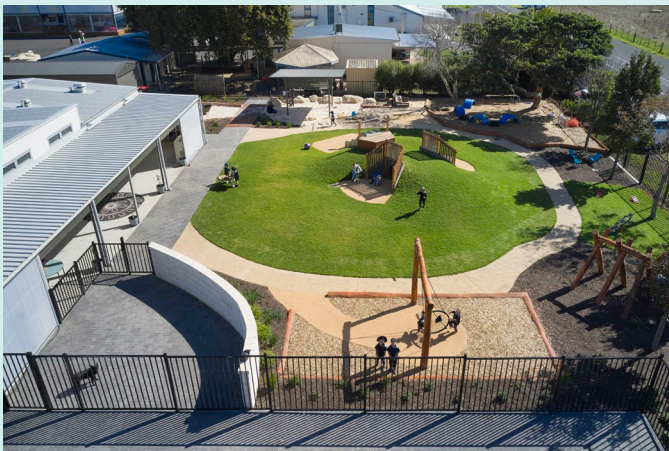


Functional Directory

Early Childhood Education and Care Facilities



Government
of South Australia

Department for Education

Functional zone

Functional sub-zone

Functional units

*This Functional Directory must be read in conjunction with the **Early Childhood Education and Care Facilities Area Schedule**, the **Education and Care Facilities - Design Standards**, and the **Australian Children's Education and Care Quality Authority (ACECQA) National Quality Framework**.*

Notes to guide interpretation of the interactive Early Childhood Education and Care Facilities Area Schedule are included below.

Education and Care

Indoor learning and play

Unencumbered area

*Explicit teaching/presentation/gathering
Collaboration/music/drama/play space
Cultural & inclusive space(s)
Reflection & meeting space(s)
Storytelling, dialogue/sharing space
Children wellbeing/sensory/regulation
space(s)/settings
Retreat/quiet space/rest area*

Must adhere to regulations:

107 – Space requirements indoor space

Encumbered area

*Water trough/art sink
Resource collection & display
Storage - equipment and resources
Storage - bedding
Storage - children's bags*

Inclusive indoor learning and play

Unencumbered area

*Explicit teaching/presentation/gathering
Collaboration/music/drama/play space
Cultural & inclusive space(s)
Reflection & meeting space(s)
Story telling/Dialogue/sharing space
Children wellbeing/sensory/regulation
space(s)/settings
Retreat/quiet space/rest area*

Encumbered area

*Water trough/art sink
Resource collection & display
Storage - equipment and resources
Storage - bedding
Storage - children's bags*

Sleep and rest

Sleep room for children under 24 months

Must adhere to regulations:

84A - Sleep and rest

Kitchen	
<i>Kitchen – explicit teaching/presentation/gathering</i> <i>Kitchen - food preparation</i> <i>Kitchen storage – cold food storage and children’s lunches</i>	
Outdoor learning and play	
<i>Unencumbered area</i> <i>Covered outdoor area(s)</i> <i>Sheltered play</i> <i>Sheltered area for children’s personal belongings</i> <i>External gathering/performance space</i> <i>Active play space</i> <i>Children’s wellbeing/sensory/regulation space(s)/ settings</i> <i>Quiet play space</i> <i>Nature play</i> <i>Challenging physical activity climbing spaces</i> <i>Sandpit and digging patch spaces</i> <i>Encumbered area</i> <i>External storage</i> <i>Water trough/art sink</i> <i>Allowance for circulation</i>	Must adhere to regulations: 108 – Space requirements outdoor space 114 – Outdoor space – shade
Community & cultural space	
<i>Indoor community meeting area</i> <i>Food preparation/kitchen</i> <i>Resource and storage area</i>	
<i>Outdoor community meeting and play space</i>	
<i>Multi-faith room</i>	
Health	
Consulting and clinical services	
<i>Consulting and clinical services</i>	Multipurpose consulting and assessment
Leadership, Administration & Staff Centre	
Leadership	
<i>Leadership Team Area</i>	
<i>ECEC Director</i>	
Administration	
<i>Foyer includes public reception & waiting</i>	
<i>Administration and program support</i>	
<i>Meeting room - Interview</i>	Must adhere to regulations: 111 – Administrative space
<i>Parenting room</i>	
<i>Staff resource and utilities area</i>	
<i>Store - Secure</i>	
<i>Store - General</i>	

Staff Centre	
<i>Staff lounge/kitchen</i>	
<i>Staff personal belongings</i>	
<i>Staff lounge - external courtyard</i>	

Staff workspaces	
Staff workspace	
<i>Staff workspace</i>	Supports collaborative work

Children, Staff and Community Amenities	
Children and Staff Amenities	
<i>Children - toilets</i>	Must adhere to regulations: 109 – toilet and hygiene facilities
<i>Children – fully-assisted toilet, shower and change</i>	
<i>Laundry</i>	Must adhere to regulations: 106 – laundry and hygiene facilities
<i>Nappy change</i>	Must adhere to regulations: 112 – nappy change facilities
<i>Staff - toilets</i>	
<i>Staff - accessible toilet</i>	
<i>Staff - shower & changeroom (end of trip)</i>	
Community Amenities	
<i>Community - accessible toilet and nappy change</i>	
<i>Community - toilets</i>	

Site and Services	
Site	
<i>Facilities and grounds maintenance</i>	
<i>Bin enclosure</i>	
<i>Bicycle store - staff</i>	
Services	
<i>Communications room</i>	Core edge Core node
<i>Engineering plant & services</i>	
<i>Stores – cleaner</i>	

Circulation	
Circulation	
<i>Internal circulation</i>	
<i>External circulation</i>	

Revision record

Version 1.2: May 2026 – updated to align language in Education and Care Facilities Design Standards

Version 1.1: May 2024 - updated template and removed 2023 references

Version 1.0: July 2023 - new document approved

Contact

Team: Asset Planning, Standards and Sustainability

Email: Education.AssetPlanning@sa.gov.au