

Statistical Update

NOV 2015
Issue 124



Government of South Australia
Department for Education and
Child Development

South Australian Government
Schools

TERM 3 2015 JUNIOR PRIMARY CLASS SIZES

This publication provides summary statistics relating to junior primary class sizes in South Australian government schools as at Term 3 2015. These data are derived from roll class information collected as part of the Term 3 Enrolment Data Collection held on Friday, 7 August 2015.

Introduction

Roll class information was first collected in the Term 1 2003 Census. The roll class is used as an estimate for the measure of class size for junior primary classes.

Prior to 2014 junior primary class size statistics were calculated using validated Term 1 Data Collection data. However due to the introduction of the Same First Day policy, from 2014 onwards the junior primary class size statistics are calculated using validated Term 3 Enrolment Census data. **This must be taken into account in any comparison of the data from 2014 onwards with that from previous years.**

The data used include classes that have years Reception, Year 1 and/or Year 2 students. In some schools, junior primary classes also include students from higher year levels. The scope of the analysis has been limited to only those junior primary classes up to Year 3, where the Year 3 students are the older age group in a combined class. Special schools and classes were excluded from the analysis due to different class arrangements in these settings.

In Term 3, 2015, the average junior primary class size for the state was 22 students per class (with a standard deviation of 3.91), and there has been little difference since 2003 when this information was first collected.

In 2015, class sizes ranged from less than 5 to 31, with the most frequently occurring class size being 24 students.

Average Class Sizes

Education Portfolio	Term 3 2014	Term 3 2015
Berri	20	18
Clare	18	18
Felixstow 1	24	24
Felixstow 2	24	24
Flinders Park 1	20	19
Flinders Park 2	23	23
Gawler	23	22
Mount Barker 1	23	23
Mount Barker 2	24	23
Mount Gambier	21	21
Murray Bridge	20	20
Noarlunga 1	22	22
Noarlunga 2	24	23
Para Hills 1	23	22
Para Hills 2	22	22
Para Hills 3	21	22
Para Hills 4	23	22
Port Lincoln	20	19
Port Pirie	21	19
Whyalla	20	20
Total Average for State	22	22

Note: Education portfolios replaced regions from 2014

The portfolios with the highest average junior primary class size in 2015 were Felixstow 1 and Felixstow 2 (24 students each) and Mount Barker 1, Mount Barker 2, Flinders Park 2 and Noarlunga 2 (23 students each).

The portfolios with the lowest average junior primary classes were Clare and Berri (18 students) and Flinders Park 1, Port Lincoln and Port Pirie (19 students each).

Number of Students by Class Type

The Same First Day policy was introduced in 2014, where reception students start school at the beginning of the year. This has affected the average number of students in classes with Reception students as in previous years the census was based on Term 1. (Table 2 shows the comparison between Term 1 2013 Term 3 2014 and Term 3 2015 data).

Prior to 2014, reception classes in term 1 were smaller in most primary schools as additional students commenced schooling during terms 2 to 4. This is likely to be a major factor in the apparent increase in class sizes when comparing term 3 2014 with term 1 enrolments in previous years.

The class type with the highest number of students per class in 2015 was the Year 2/Year 3 classes with an average of 24 students; the same as in 2014.

Class Type	Term 1 2013	Term 3 2014	Term 3 2015
Reception	17	21	21
Reception/Year 1	19	22	21
Rec/Year 1/Year 2	16	18	17
Rec/Yr 1/Yr 2/Yr 3	13	13	15
Year 1	22	23	23
Year 1/Year 2	23	23	23
Year 1/Year 2/Year 3	18	19	17
Year 2	24	24	23
Year 2/Year 3	25	24	24
Total for State	21	22	22

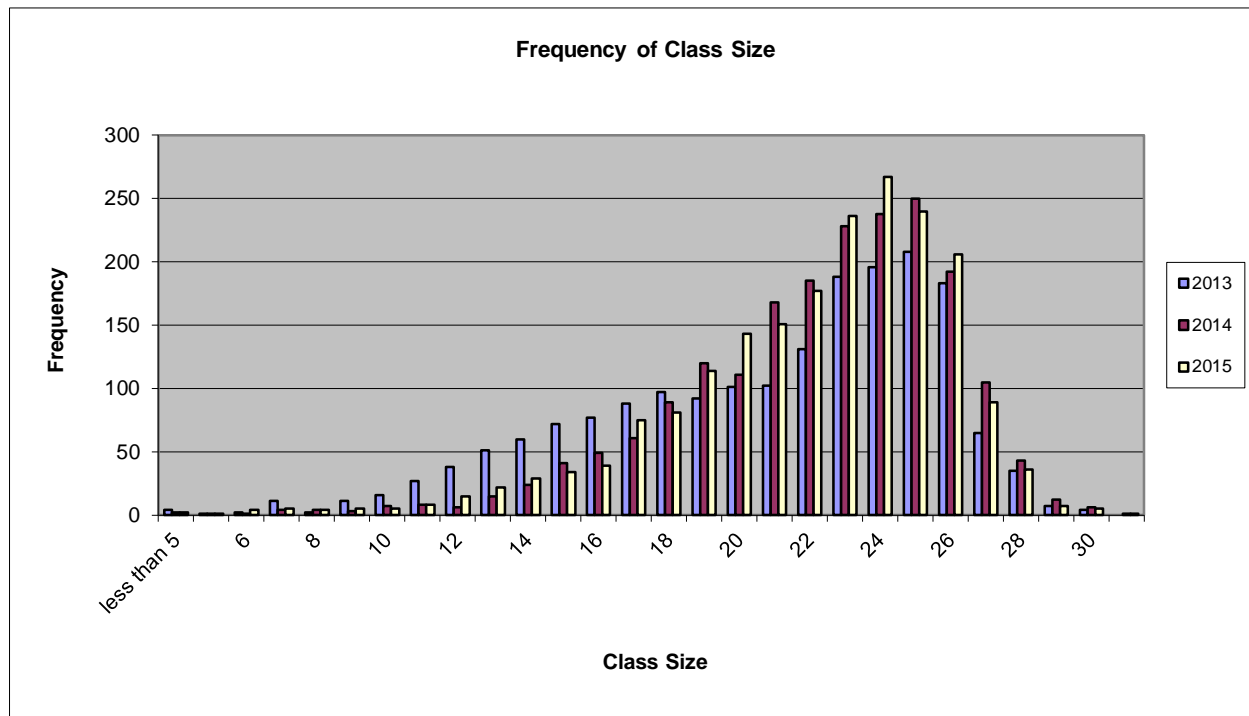


Figure 1: Frequency of Class Size 2013, 2014 and 2015

Note: 2013 data is for term 1, 2014 and 2015 data is for term 3

Frequency of Class Size

Figure 1 provides a frequency distribution of class sizes

The most frequently occurring class sizes were 24 students (267 classes) and 25 students (240 classes).

Class Size by School Subtype

Aboriginal Schools and Anangu Schools had the smallest average class sizes, with 12 and 13 students respectively.

Primary Schools, Junior Primary Schools, Primary/Secondary Schools and Area Schools all had larger junior primary class sizes with the average number of students per class ranging between 19 and 22.

Class Size by Class Type

Of junior primary classes 83% had less than 26 students per class, an increase from 82% in 2014.

Of junior primary classes 22% had less than 20 students per class; the same as in 2014.

Table 3: Class Type Percentage of Junior Primary Classes Below 20 and 26 Students, Term 3 2014	% Classes Below 20 Students per Class	% Classes Below 26 Students per Class
Reception	31	94
Reception/Year 1	29	91
Reception/Year 1/Year 2	69	93
Reception/Year 1/Year 2/Year 3	88	94
Year 1	19	84
Year 1/Year 2	11	77
Year 1/Year 2/Year 3	57	95
Year 2	12	73
Year 2/Year 3	9	64
Total	22	83

Class Size by Index of Disadvantage

When class size is examined by Index of Educational Disadvantage, it is evident that more disadvantaged schools have lower average class sizes. The average class size for the most disadvantaged schools (index category 1) was 18, compared with 24 for the least disadvantaged schools (index category 7).

Table 4: Average Junior Primary Class Size by Index of Disadvantage, 2013-2015	Average Number of Students per Class		
	Term 1 2013	Term 3 2014	Term 3 2015
1	17	18	18
2	18	20	19
3	20	21	21
4	20	22	21
5	21	23	23
6	23	24	24
7	23	24	24
Total for State	21	22	22

In summary, it can be seen that between 2013 and 2015 class sizes have remained stable, with only minor variations over time.

FOR FURTHER INFORMATION

Data Management and Information Systems
Department for Education and Child Development

Phone: 08 8226 3269

Fax: 08 8410 1671

<http://www.decd.sa.gov.au>